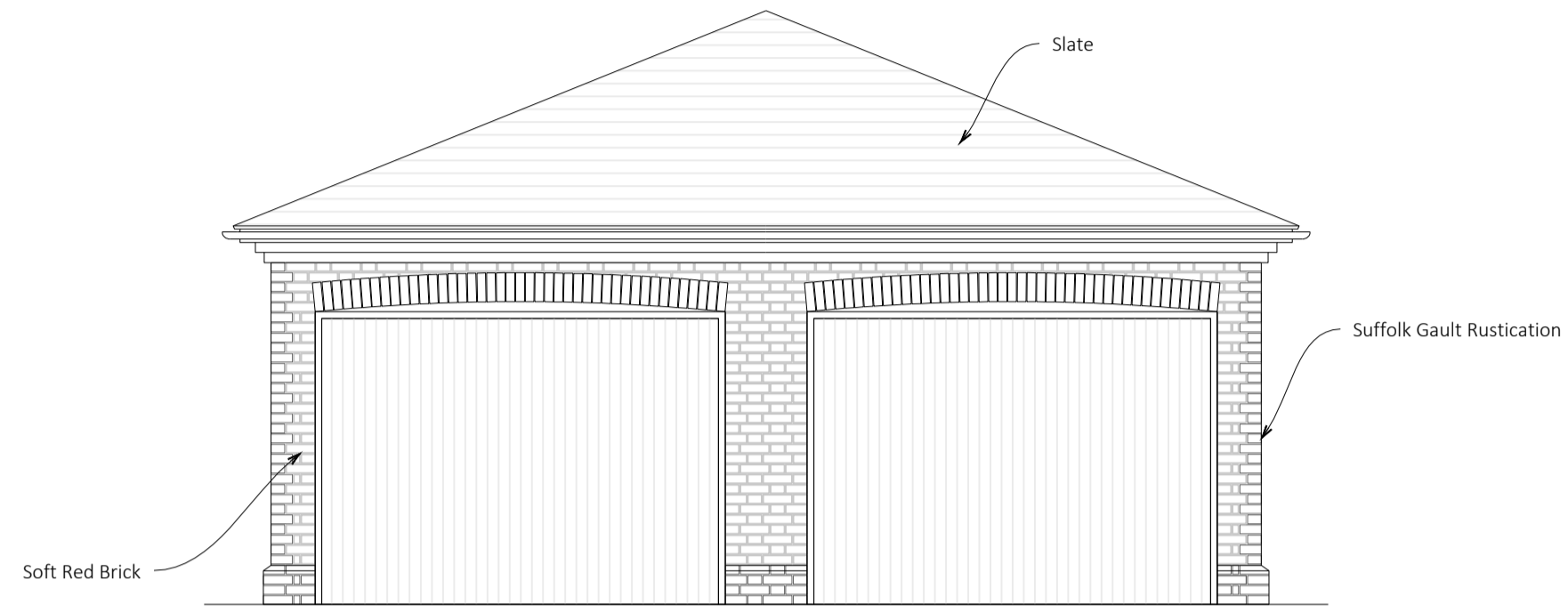
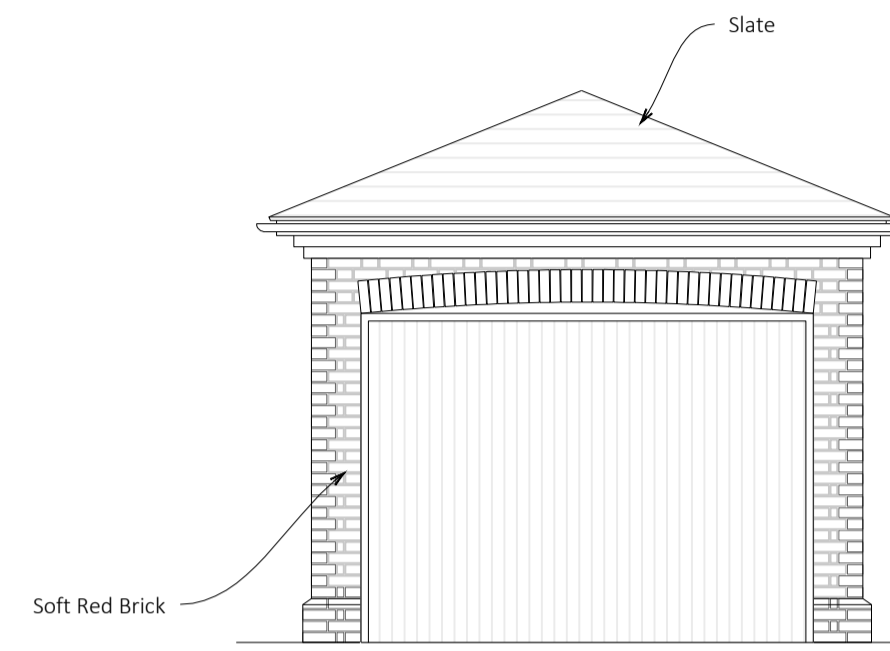


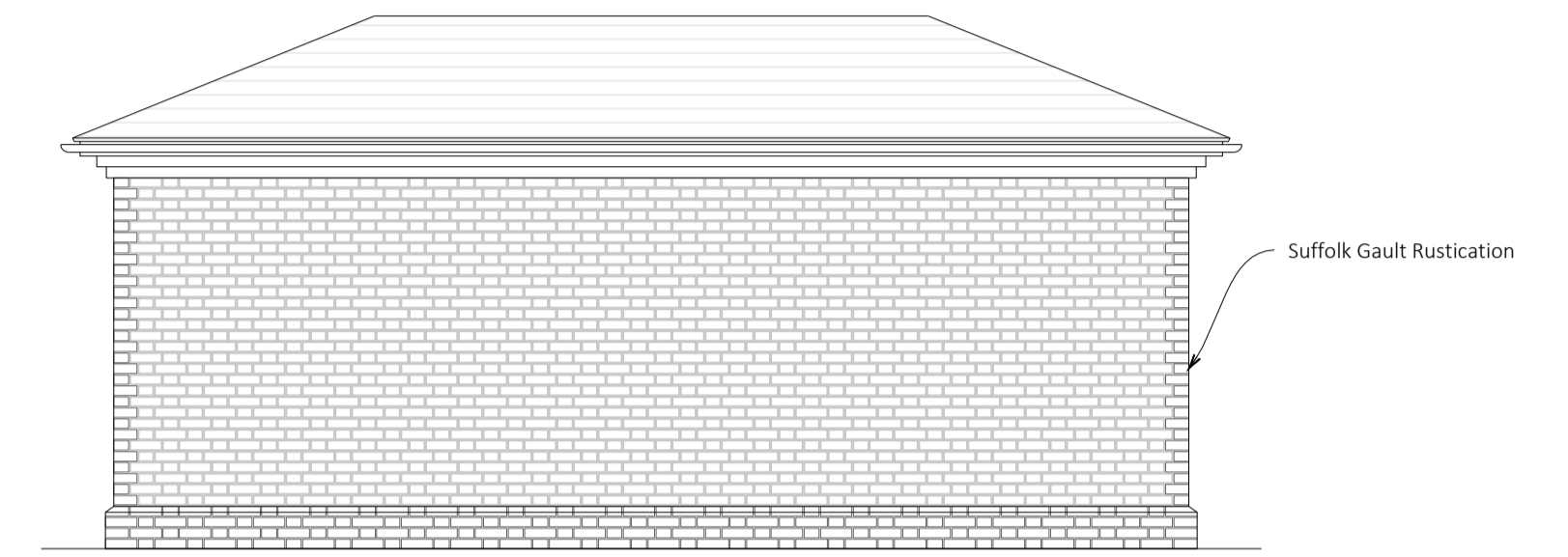
- Please Note:
- Do not scale directly from these drawings.
  - All dimension should be checked on site by the contractor prior to the commencement of any works.
  - Any discrepancy should be reported to CWL immediately.
  - Contractors should carry out their own assessment before commencing any works.
  - All works are to be carried out in accordance with relevant Approved Documents & British/Scottish Standard where applicable.
  - CWL does not take any responsibility for information provided by third parties.



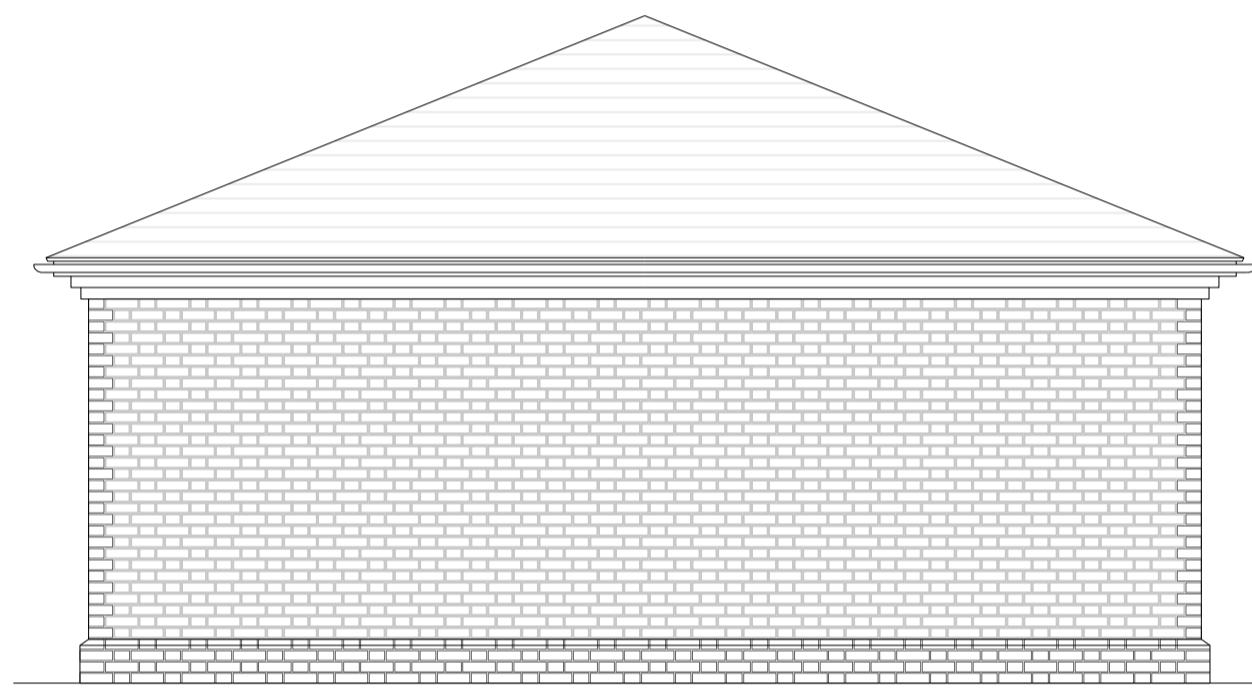
DOUBLE GARAGE - FRONT ELEVATION



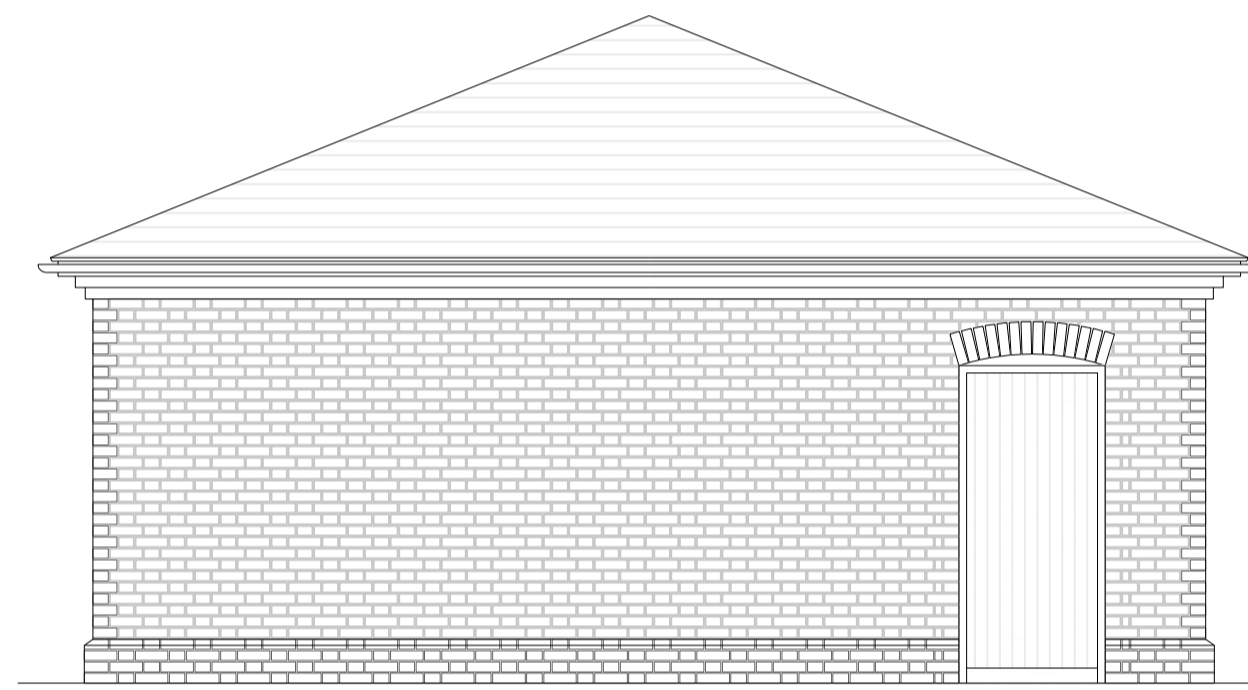
SINGLE GARAGE - FRONT ELEVATION



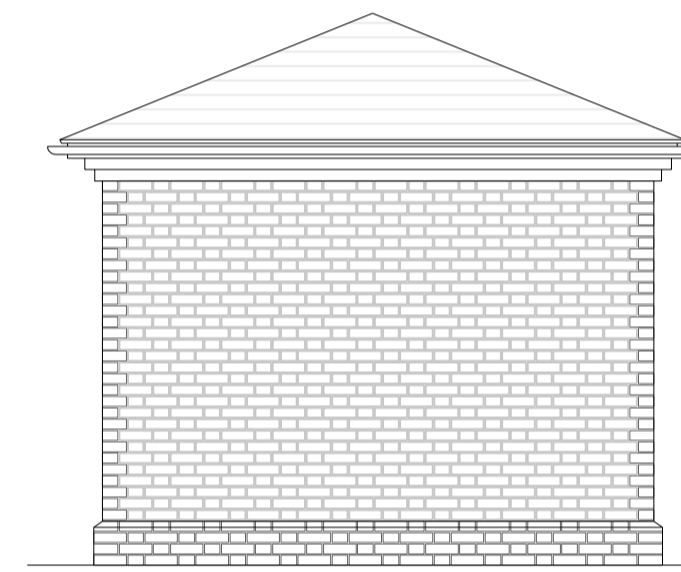
SINGLE GARAGE - SIDE ELEVATION



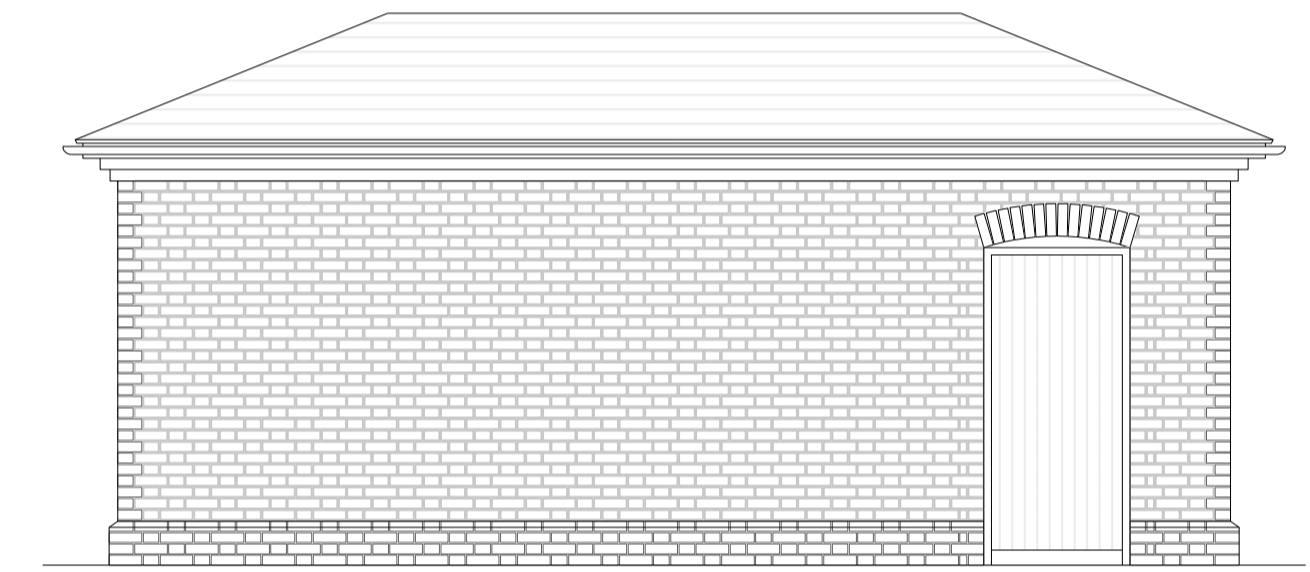
DOUBLE GARAGE - SIDE/REAR ELEVATION



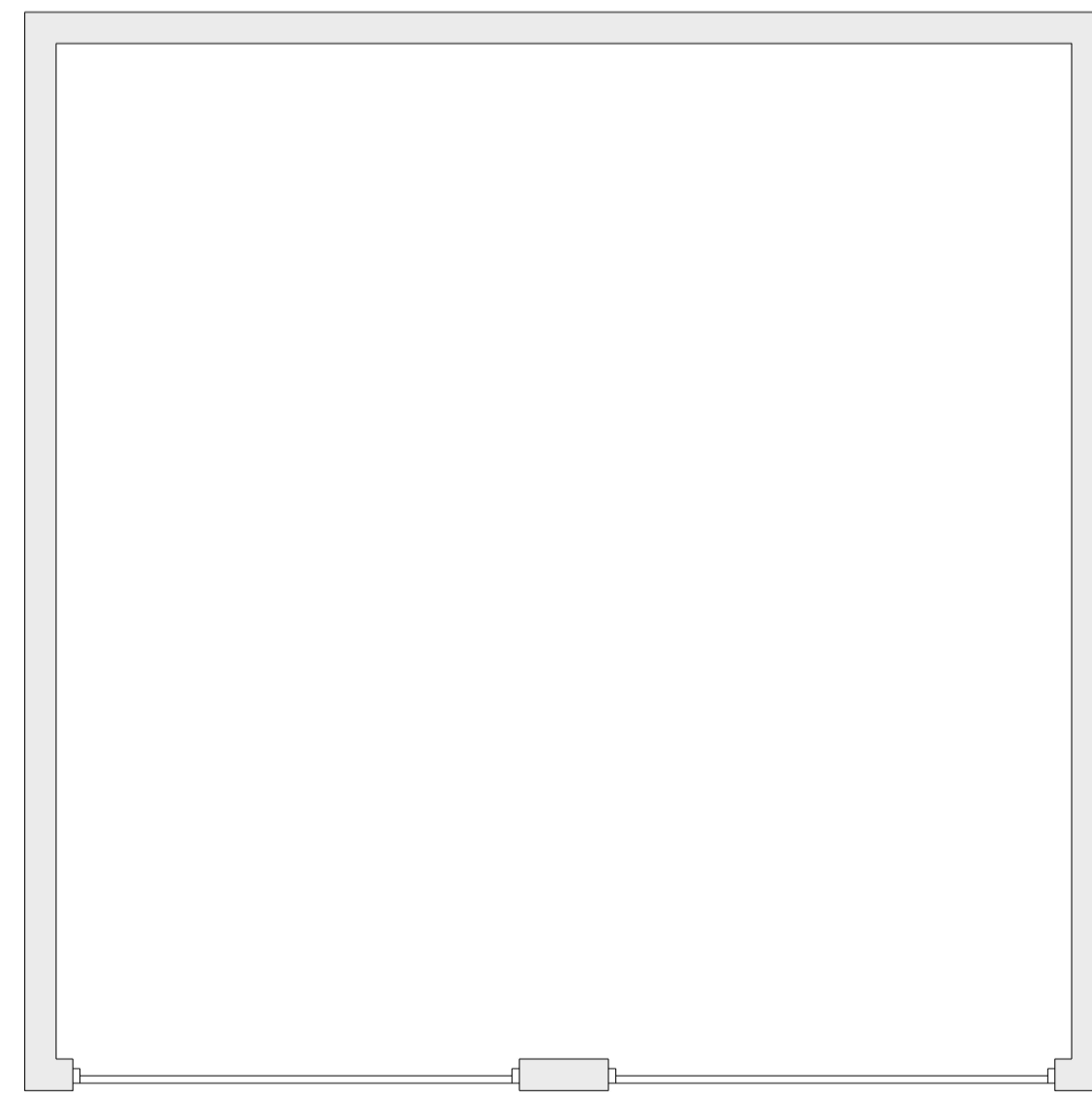
DOUBLE GARAGE - SIDE ELEVATION INC DOOR



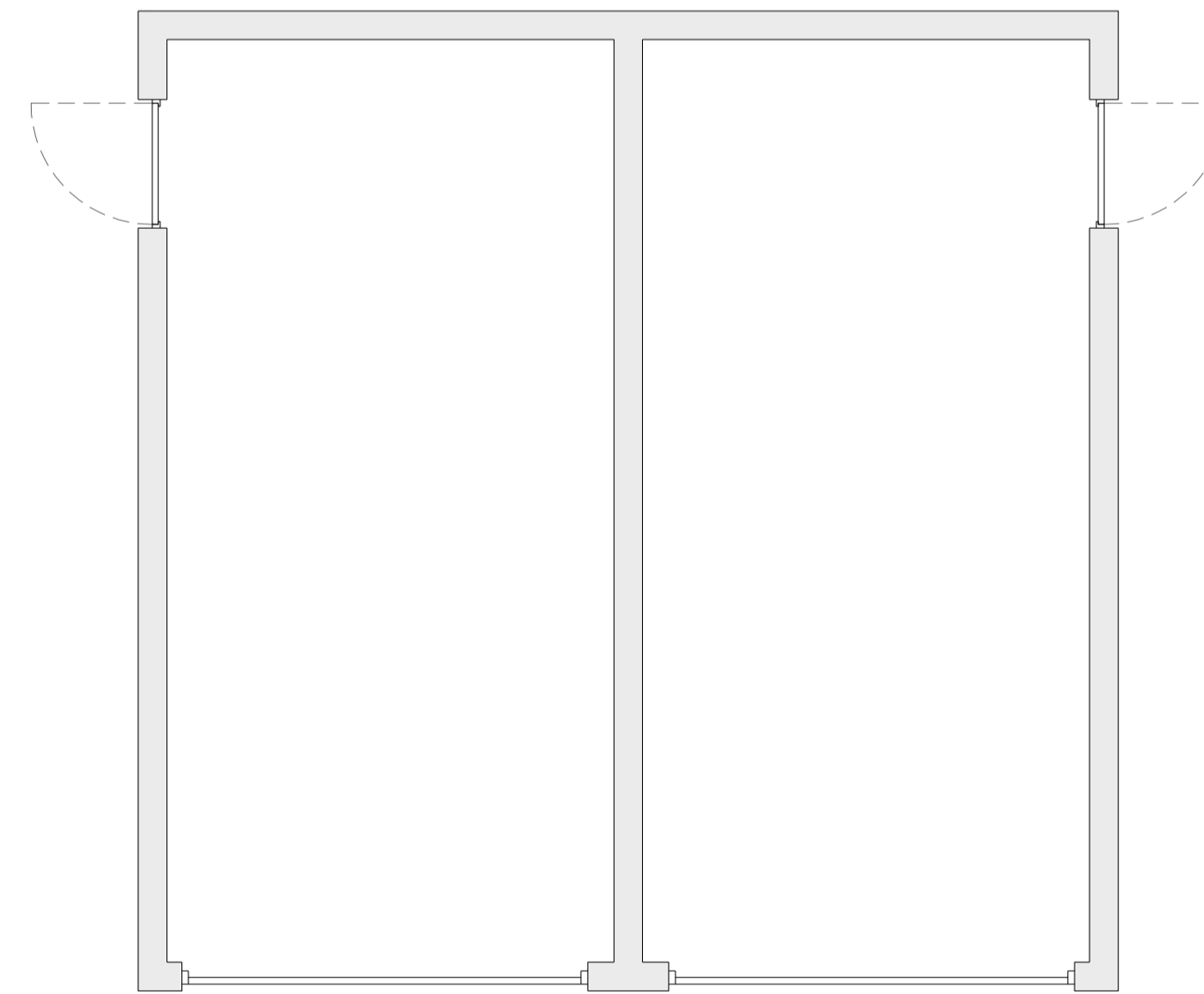
SINGLE GARAGE - REAR ELEVATION



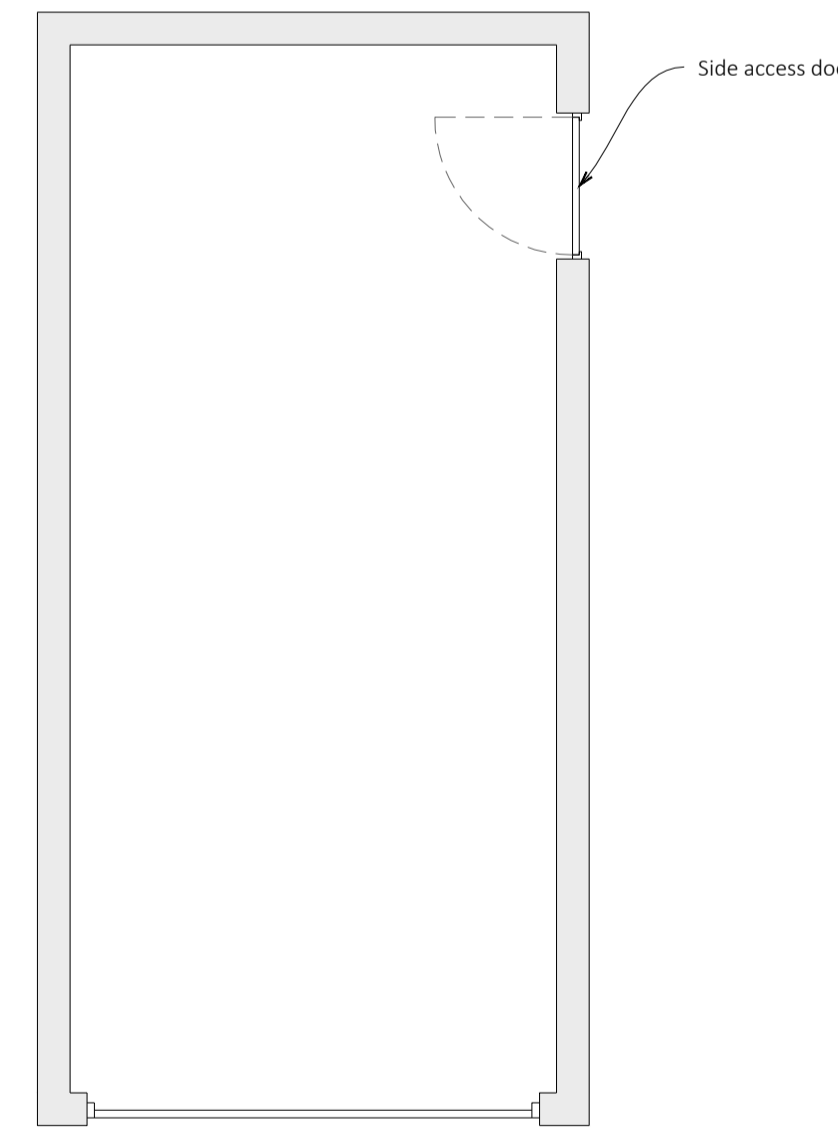
SINGLE GARAGE - SIDE ELEVATION



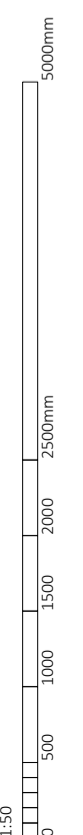
Double Garage - GA



Divided Double Garage - GA  
(In Between Dwelling Type B)



Single Garage - GA



Revision:  
A - Initial Proposal - 24/10/2017



36 Colneford Hill  
White Coline  
Colchester  
CO6 2PQ  
01787 221 486  
Studio@clockworklime.com  
www.clockworklime.com

**CLOCKWORKLIME**

Project Details:

Drawing No: 958/S2/04/A  
Drawing Title: Proposed Garages  
Scale: 1:50 @ISO A1  
Date: 24/10/2017  
Checked: SS

